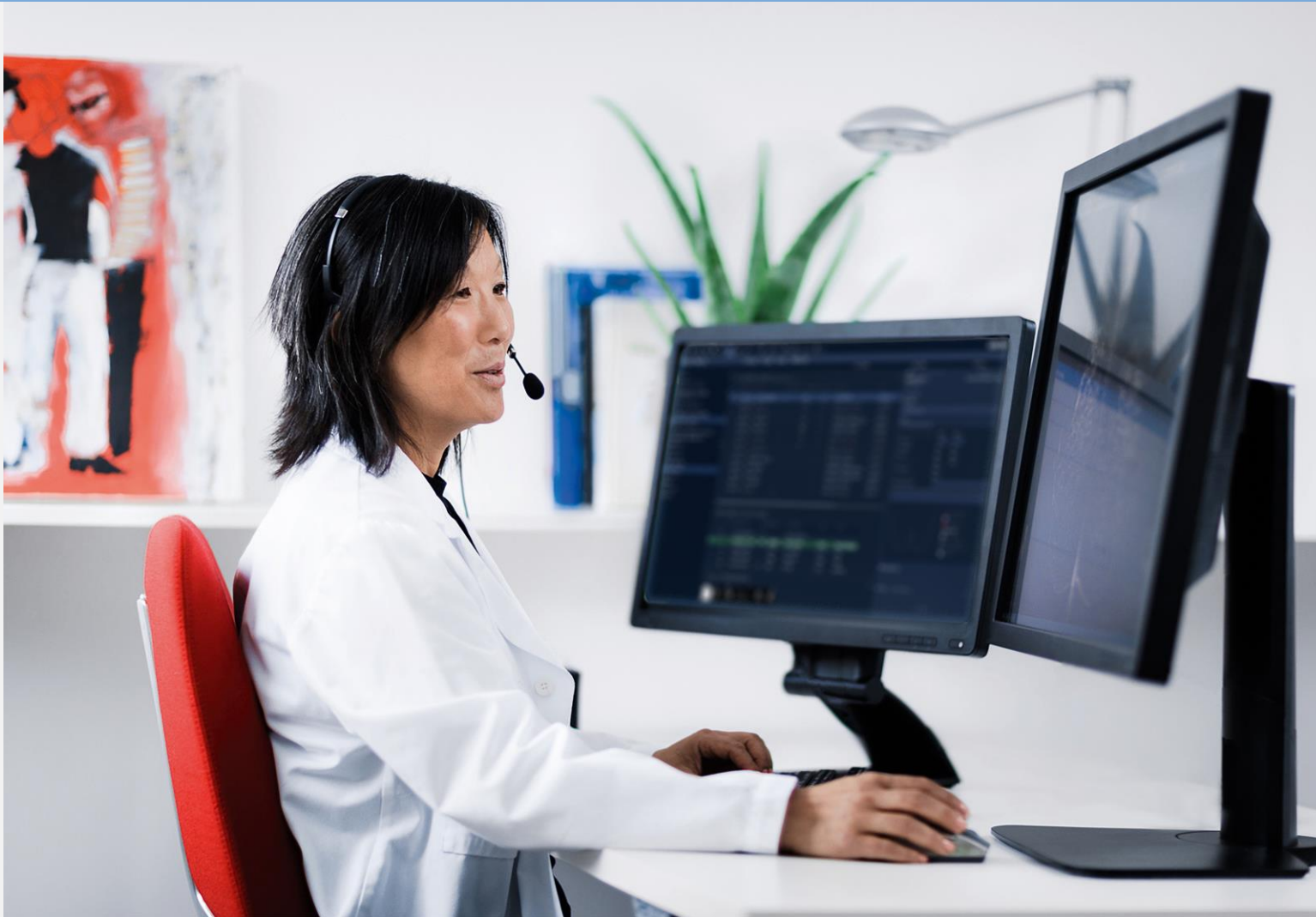


IHE Integration Statement

Sectra XDS Registry and Repository

Sectra XDS, Version 1.1, November 2021



Contents

1	Introduction.....	2
2	About IHE.....	3
2.1	Integrating the Healthcare Enterprise (IHE).....	3
2.2	References.....	3
3	IHE Integration Statement.....	5

1 Introduction

The Integrating the Healthcare Enterprise (IHE) Integration Statement was developed as a high-level statement of integration for products, which were intended to interoperate, based on IHE Integration Profiles. This document identifies the IHE Actors, IHE Integration Profiles and options Sectra AB has implemented in each product version.

The Sectra IHE Integration Statement has been created to assist the reader in determining whether and to what extent interoperability with other vendors might be supported. The IHE Technical Framework specifies a subset of the working mechanism of the healthcare enterprise and defines their exchanges in terms of a set of coordinated transactions. The actors and transactions expressed in the IHE Technical Framework are generalizations of actual healthcare information system environments. While some of the transactions are customarily carried out by specific product groups (e.g. HIS, RIS, PACS, or modalities), the IHE Technical Framework purposely avoids relating functions or actors with such product groups. For each actor, the IHE Technical Framework identifies only those functions linked with integrating information systems.

The IHE definition of an actor should not be interpreted as the absolute definition of any product that might implement that particular actor. In addition, the framework itself should not be taken as the absolute definition of healthcare information system architecture.

This IHE Integration Statement affords the reader with a sophisticated view of supported IHE integration profiles. For further exploration, additional information can be found in the DICOM and HL7 Conformance Statements of this product and in the IHE Technical Framework. This IHE Integration Statement does not guarantee successful interoperability of this product with other vendor's products. It is the user's responsibility to thoroughly analyze the application requirements and to specify a solution that integrates the Sectra PACS or Sectra VNA with other vendor's software and systems.

2 About IHE

The following topics are included in this chapter:

- Integrating the Healthcare Enterprise (IHE)
- References

2.1 Integrating the Healthcare Enterprise (IHE)

IHE is a multi-year initiative undertaken by medical specialists, administrators, information technology professionals and manufacturers, sponsored by the Radiological Society of North America (RSNA) and the Healthcare Information and Management Systems Society (HIMSS), whose sole purpose is to improve the way computer systems in healthcare share information.

IHE is not a standards organization. Instead it promotes coordinated use of existing standards such as DICOM and HL7 to develop workflow solutions for the healthcare enterprise. Systems designed in agreement with IHE profiles communicate with one another better, are easier to implement, and facilitate the efficient access of information. Physicians, nurses, administrators and other healthcare professionals foresee a day when vital information can flow seamlessly from system to system and be readily available at the point of care. IHE is intended to make this vision a reality by improving the condition of systems integration and eliminating barriers to optimal patient care.

Though begun in the USA, the IHE is a world wide initiative. The Regional IHE Initiatives currently encompass IHE – Asia Oceania, IHE – EU (Europe) and IHE – NA (North America). The National and Regional IHE Initiatives coordinate the deployment of the IHE Technical Framework and Integration Profiles and give input to their development related to local needs and issues. They are sponsored and overseen by relevant national/regional professional associations and include membership and staff of these groups as well as local vendor representatives. These groups may rely on funding from other organizations (e.g., governmental bodies or foundations) and are responsible for securing and managing any such funds.

2.2 References

General IHE information:

- IHE home: <http://www.ihe.net>
- In North America: www.rsna.org/IHE
- Europe: <http://www.ihe-europe.org>
- Japan: <http://www.jira-net.or.jp/ihe-j>

Vendor's IHE information:

- <https://sectra.com/medical/knowledge-center/conformance-statements/>

Vendor's DICOM Conformance Statement

- <http://www.sectra.com/medical/DICOM>

Vendor's HL7 information:

- <http://www.sectra.com/medical/hl7>

3 IHE Integration Statement

Vendor	Product Name	Version	Date
Sectra AB	XDS Registry and Repository	1.1	2021-11-02

This product implements all transaction required in the IHE Technical Framework to support the IHE

Integration Profiles Implemented	Actors Implemented	Options Implemented
Cross Enterprise Document Sharing (XDS.b)	Document Repository	None
	Document Registry	<ul style="list-style-type: none">• Patient Identity Feed (as ITI-8)• Reference ID
Cross-Community Access (XCA)	Initiating Gateway	XDS Affinity Domain
	Responding Gateway	None

